

# REETH AND SWALEDALE

Le Tour De France  
GRAND DEPART 2014

# Souvenir guide

EXPERIENCE EVERYTHING THAT SWALEDALE HAS TO OFFER

## FEATURING:

- **A MAP OF THE ROUTE OF THE GRAND DEPART** through Swaledale
- **A SCHEDULE OF EVENTS** taking place
- **THINGS TO SEE AND DO** – cycling and beyond!

• Food and Drink • Accommodation • Local Shopping • Village Guide



\* EACH GUIDE SOLD SUPPORTS VITAL EMERGENCY SERVICES



50p from each copy sold is donated to the Swaledale Mountain Rescue Team and the Great North Air Ambulance - vital rural services for The Dales.





# CYCLISTS WELCOME (LYCRA OPTIONAL)

At YHA you'll find barns and farmhouses, castles and cottages perfectly positioned for some of the best cycling trails and tracks all over England and Wales. You'll find somewhere to wash the mud off your bike (and yourself) and somewhere safe to store it. And you'll find a homemade cake, a pot of tea and a warm welcome always waiting.

[Find your way at yha.org.uk/year-of-the-bike](https://www.yha.org.uk/year-of-the-bike)



yha

## BIENVENUE!



Un accueil chaleureux à Swaledale, l'un des endroits les plus beaux et les mieux préservés de l'Angleterre et cette année fiers hôtes au lever de rideau du Tour de France - le plus grand événement sportif annuel au monde. Le Grand Départ viendra par Swaledale le samedi 5 Juillet et promet d'être une fois dans un spectacle à vie comme la course aux coureurs à travers quelques-uns des paysages les plus spectaculaires et les plus spectaculaires de l'itinéraire.

Dans ce guide de souvenir unique, vous trouverez des informations sur les événements et activités qui se déroulent autour de Le Grand Départ. Nous espérons également vous donner un aperçu des nombreuses autres choses de cet endroit spécial a à offrir qui vous aideront à faire de votre visite un moment inoubliable. Il ya un calendrier de choses à faire menant au grand jour et le week-end de la course, en plus de beaucoup d'informations et des idées d'activités et de lieux à visiter mais court ou long séjour sera.

Nous espérons que vous apprécierez votre temps ici et que vous revenir à Swaledale à nouveau très bientôt.

## MERCI POUR VOTRE SOUTIEN

Merci pour l'achat d'un exemplaire de la revue - ainsi que d'aider à soutenir les entreprises locales, un minimum de 50p du prix de couverture est donné à deux organisations - L'équipe Swaledale Mountain Rescue et Air Ambulance Grand Nord - deux services essentiels dans cette région rurale.

Printed in the UK on paper which is made from sustainable forests. All contents copyright © 2014 Fletcher & Lee Ltd, The Smithy, Grinton, North Yorkshire DL11 6HJ. All rights reserved. While every effort is made to ensure accuracy, no responsibility can be accepted for inaccuracies, howsoever caused. No liability can be accepted for illustrations, photographs, artwork or advertising materials while in transmission or with the publisher or their agents. All information is correct at time of going to print. Publication designed by www.ambientcreative.com

## WELCOME!



A warm welcome to Swaledale, one of England's most beautiful and unspoilt places and this year proud hosts to the curtain raiser of The Tour De France – the world's largest annual sporting event. The Grand Depart will come through Swaledale on Saturday 5th July and promises to be a once in a lifetime spectacle as the riders race through some of the route's most dramatic and spectacular landscapes.

In this unique souvenir guide, you will find information about events and activities taking place around The Grand Depart. We also hope to give you a flavour of the many other things this special place has to offer that will help to make your visit a memorable one. There's some ideas of things to do leading up to the big day and during the weekend of the race, plus lots of information and ideas for activities and places to visit however long or short your stay will be.

We do hope you'll enjoy your time here and that you'll come back to Swaledale again very soon.

## THANKS FOR YOUR SUPPORT

Thank you for buying a copy of the magazine – as well as helping to support local businesses, a minimum of 50p from the cover price is being donated to two organisations – The Swaledale Mountain Rescue Team and The Great North Air Ambulance – two vital services in this rural area.

**EACH GUIDE SOLD WILL SUPPORT VITAL EMERGENCY SERVICES**



# The Bridge Inn Grinton

*Traditional coaching Inn, serving quality food, award winning ales and fine wines*



[www.bridgeinn-grinton.co.uk](http://www.bridgeinn-grinton.co.uk) T:01748 884224

Cover photographs: Cyclist descending Buttertubs Gummerside; Yellow Bicycle © Phil Lee; Cup of Coffee; Coast to Coast sign; Waterfall © Greg Marshall.

# WHAT'S HAPPENING

## AND WHEN

Aside from the actual Grand Depart, there's lots to see and do in Swaledale and the surrounding dales. Here's just a selection of events taking place in the run up to and during the weekend of the Tour.

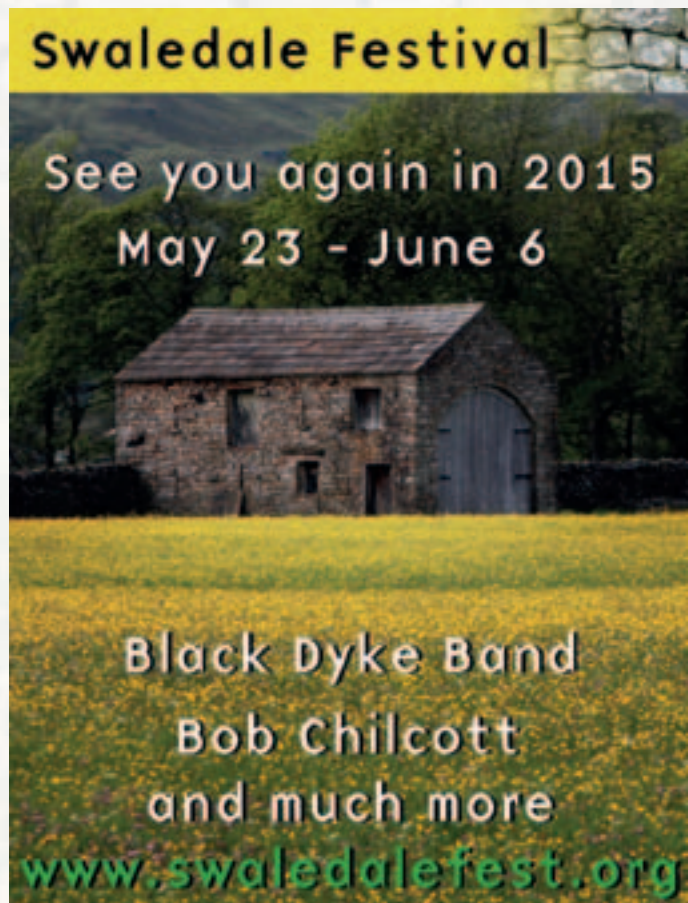
We've done our best to make sure that the details of events are accurate, however please check before you travel.

You can find out more about what's happening at [www.reeth.org](http://www.reeth.org), [www.2dales.org](http://www.2dales.org), [www.swaledale.net](http://www.swaledale.net), [www.richmondshire.gov.uk](http://www.richmondshire.gov.uk) and [www.yorkshire.com](http://www.yorkshire.com)

Alternatively, visit Hudson House, Reeth where you can find more information about timings and other events.

### JUNE AND JULY

The Station (La Gare) Richmond hosts a range of events celebrating all things French and cycling.



### JUNE

11	<b>Special day on lead mining</b> <i>Swaledale Museum Reeth</i>	
13	<b>Talbot House</b> <i>The Georgian Theatre Richmond</i>	7.30pm
14	<b>Champions Tourney</b> <i>Bolton Castle, Leyburn</i>	12pm-4pm
14	<b>An Evening With Helen Fraser</b> <i>The Georgian Theatre Richmond</i>	7.30pm
20	<b>Walking on the Roof</b> <i>The Georgian Theatre Richmond</i>	7.30pm
21	<b>The Book</b> <i>The Georgian Theatre Richmond</i>	7.30pm
27	<b>Martin and Eliza Carthy in concert</b> <i>St Andrew's Church, Grinton</i>	
27-28	<b>World of Song and Dance Shows</b> <i>Reeth Memorial Hall</i>	7.30pm
28	<b>Djangologie</b> <i>The Georgian Theatre Richmond</i>	7.30pm
28	<b>Bell ringers tower open day</b> <i>St. Andrew's Church, Grinton</i>	10.30am-4.30pm
29	<b>Reeth Brass Band playing on The Green</b> <i>Reeth</i>	2pm
29	<b>A Day Out</b> <i>The Georgian Theatre Richmond</i>	2pm

### JULY

1	<b>The Comedy of Errors</b> <i>Bolton Castle, Leyburn</i>	
2	<b>Cycling and Sporting Sale</b> <i>Tennants Auctioneers, Leyburn</i>	10.30am
2	<b>Taking the Tour – Bryn Lennon</b> <i>The Station Richmond</i>	
4	<b>Velorama – A Century of The Bicycle</b> <i>Gunnerside Village Hall</i>	6pm
4	<b>Belleville Rendevous</b> <i>Gunnerside Village Hall</i>	6pm
4	<b>Tour De Farce</b> <i>Bolton Castle, Leyburn</i>	7.30pm
4-6	<b>King of the Mountains Festival</b> <i>Muker</i>	
5	<b>LE GRAND DEPART THROUGH SWALEDALE</b>	
5	<b>Encore - An evening of French chansons</b> <i>Georgian Theatre Richmond</i>	
6	<b>Apres-Tour-wind-down-do</b> <i>The Station Richmond</i>	

# SWALEDALE NATURE'S INSPIRATION

**'Swaledale in Yorkshire is a little country in itself. Once there, shut in by barriers of hills, you are satisfied: shrouded in its mystery, the rest of the world seems unimportant and unreal.'**  
Ella Pontefract, 1934.

**A**sk anyone that knows Swaledale and they'll tell you that it's just that little bit special. More remote and unspoilt than neighbouring dales to the south, Swaledale is often referred to as the connoisseurs dale. At the northern tip of the Yorkshire Dales National Park, Swaledale is rightly famous for its hay meadows, field barns, heather moors and waterfalls. Thirty six kilometres long from Nine Standards Rigg in the West to Richmond in the East, the river Swale rushes through carving out the deep and rugged valley. The combination of dramatic scenery, fascinating history, peace and tranquility offers something for everyone to enjoy.

Swaledale's distinctive character has been formed by man and nature in equal parts. The forces of the ice age and the weather combined with hill farming, lead mining and grouse shooting have made a place of amazing contrasts. The most significant for outdoor enthusiasts is the huge network of paths and tracks created largely by 18th and 19th century lead miners that give easy access to the moor either on foot, by bike or on horseback and provide hundreds of miles of peaceful, traffic free enjoyment. Add to this the centre part of The Coast to Coast long distance walk, part of The Pennine Way, fishing, caving, moto cross and canoeing and anyone who likes to get outside will be spoilt for choice.

For lovers of music, the arts and culture, Swaledale is home to a thriving community of resident artists, including potters, painters and sculptors, all inspired by the unique surroundings of this beautiful area. Its reputation in the arts is underpinned by the annual Swaledale Festival held in May and June which includes classical, choral and folk music, films, exhibitions, poetry readings, workshops and guided walks. Established in the early 1970s it's now renowned as one of the leading festivals of its type in the UK. The local shows of Reeth and Muker have a long, proud history of giving the community an opportunity to celebrate and join together for that one special occasion when they can display community achievements and talents for all to share. These shows represent the very heart of dales life.

With so much to offer, Swaledale really is an inspiration. To find out more about what there is to see and do, visit [www.reeth.org](http://www.reeth.org), [www.swaledale.net](http://www.swaledale.net), [www.2dales.org](http://www.2dales.org) or [www.yorkshire.com](http://www.yorkshire.com)



The Punch Bowl

**Great food, fine ales and wines and a friendly welcome.**

**An ideal location for walking, cycling and touring the Dales with some of the most breathtaking views in Swaledale.**

**Contemporary luxury and timeless craftsmanship combine with loads of original 17th Century character to provide a stylishly relaxing base from which to enjoy the stunning Yorkshire Dales.**



**Punch Bowl Inn, Low Row,  
Richmond, North Yorkshire**

**T: 01748 886233 E: [info@pbinn.co.uk](mailto:info@pbinn.co.uk)**

**[www.pbinn.co.uk](http://www.pbinn.co.uk)**

# REETH

## A CAPITAL PLACE

Reeth © Phil Lee



We'll help you **FIND, BOOK and EXPERIENCE** a huge range of **ACTIVITIES** in the Yorkshire Dales National Park.

Simply visit [www.dalesbound.co.uk](http://www.dalesbound.co.uk) to begin your search.

If you need help or ideas please call us on 01748 900 420.



OVER 100 THINGS TO DO IN THE YORKSHIRE DALES

**R**eeth is widely regarded as the capital of Swaledale as it lies at the meeting point of Swaledale and Arkengarthdale, two of North Yorkshire's most northern dales. Its large sloping village green, where traditional events and markets are often held, invites the visitor to stay and explore or perhaps just enjoy the magnificent vista.

In Saxon times Reeth was only a settlement on the forest edge, but by the time of the Norman Conquest it had grown sufficiently in importance to be noted in the Domesday Book.

Later it became a centre for hand-knitting and the local lead mining industry, which was controlled from here, but it was always a market town for the local farming community. Its eighteenth-century houses and hotels clustered around the village green making it one of the most popular villages in the Dales.

Its history can be traced in the Folk Museum, which houses exhibits illustrating the life and traditions of Swaledale, and outlining the principle theme of lead mining. At the peak of the lead mining industry Reeth had a population of 1460 but cheaper foreign imports doomed Swaledale lead production and by 1885 the area was already becoming the farming community that we see today.

Reeth's popularity with visitors is easy to understand. A huge variety of walks and trails radiate from the village green for walkers and cyclists of all ages and abilities. There is an array of galleries, shops, and tea shops and no shortage of great hotels, pubs and guest houses. The choice for the adventurous thrill seeker or those wishing to simply take in the scenery makes Reeth justifiably a 'capital' place to stay and enjoy.

# A VISITORS GUIDE TO REETH

- 1 Dolos Farm Toys & Books
- 2 Holiday Homes Yorkshire
- 3 Sculpture by Stef Ottewanger
- 4 Groceries Sculpture
- 5 Philip Bostons Cabinet Maker
- 6 The Nutmeg gallery
- 7 Skelton studios
- 8 Goska - the art of glass
- 9 Jane Ellis - artist
- 10 Reeth Garage
- 11 The Hair Salon
- 12 The Burgynre Hotel
- 13 The Buck Hotel
- 14 Scenicview gallery
- 15 Reeth Bakery
- 16 The gift shop
- 17 Overton House Cafe
- 18 The Kings Arms
- 19 The Black Bull
- 20 Mutton House/TIC
- 21 Swaledale Outdoors
- 22 Garden House Gallery
- 23 Hidden Treasures
- 24 Reeth Ice-cream Parlor
- 25 Fat Sheep
- 26 The Old Temperance workshop
- 27 The Copper Kettle
- 28 Alpine Cottage
- 29 Reeth Village Store
- 30 Swaledale Museum
- 31 The Post Office
- 32 Ivy Cottage Tea Room





# *Cuckoo Hill View Ice Cream Parlour*

*Situated on Reeth Green in  
Beautiful Swaledale*

- *Choose from 16 flavours of delicious Brymor Real Dairy Ice Cream, made on the farm at nearby Jervaulx*
- *Treat yourself to a mouth watering sundae*
- *Served in a glass or a variety of cornets*
- *Tea and coffee*

*Open Daily – Tel. No 01748 884929*  
*[www.reethicecreamparlour.co.uk](http://www.reethicecreamparlour.co.uk)*



**More than just a Post Office...**

## **Reeth Post Office: Serving our community**

### **Post Office**

No fee Cash Withdrawals  
All Postal Services  
Banking Services  
Travel Money  
Travel Insurance  
Car Tax  
Health Lottery  
Fishing Licences  
Phone top ups  
Gift Cards

### **Gift Shop**

Gifts  
Hand-made Chocolate  
Toys  
Cards  
Stationery  
Books  
Local maps  
Walking & guide books  
Vending Machine  
Photocopying

### **Cornershop**

Soft Drinks  
Beers, Wines & Spirits  
Sandwiches & Pies  
Milk, Dairy & Meat  
Fruit & Vegetables  
Cakes & Biscuits  
Snacks and Crisps  
Household Goods  
Toiletries  
Lottery



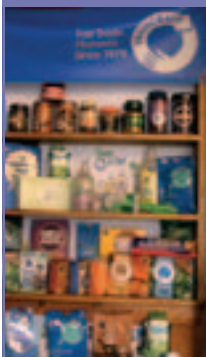
Reeth Post Office  
Reeth,  
Richmond,  
North Yorkshire  
DL11 6SE

**Tel: 01748 884201**

**[www.reethpostoffice.co.uk](http://www.reethpostoffice.co.uk)**



## THE OLD TEMPERANCE BOOKSHOP



*'La librairie chrétienne souhaite la bienvenue au Tour de France'.*

Christian Books, Cards & Crafts  
Beside the village green in Reeth

### OPENING TIMES

Mon, Thurs, Sat: 1.30pm - 4.00pm  
Friday (Market Day): 10.30am - 4.00pm



REETH, RICHMOND, DL1 1 6TE  
TEL. 01748 884185



L I C E N S E D T E A R O O M

**At the corner of the village green in  
Reeth, Swaledale**

**Telephone: 01748 884748**

Open from March to October  
(except Wednesdays)

Home-made cakes and main meals  
served all day

**Please note that on the day of  
Le Grand Départ, we will be  
providing a take-away service only**



## Equestrian Book Fair

Specialist retailer of equestrian and country life themed products including books, DVD's and a fabulous gift range for all ages and to suit all pockets.

We also stock country clothes and accessories

All displayed in our shop in Reeth and now also our Richmond shop which is based in the old TIC Centre, Friary Gardens, Victoria Road, Richmond, North Yorkshire Equestrian Bookfair Limited or Dale Farm Toys / Books

**Unit 2 Reeth Dales Centre, Silver Street, Reeth,  
North Yorkshire DL11 6SP**

**Telephone / Fax: 01748 884909**  
Mobiles: 07790 480211 / 07733367860  
E: [info@equestrianbookfair.com](mailto:info@equestrianbookfair.com)

[www.equestrianbookfair.com](http://www.equestrianbookfair.com)



## The Garden House Shop



**Anvil Square, Reeth, Swaledale**

Hand made pottery, patchwork, knitting  
and award-winning Damson Cheese

and  
**The Haven Cottage**

Two bedroom cottage for holiday rental in Reeth  
01748 884648/884188 [gardenhouse1@tiscali.co.uk](mailto:gardenhouse1@tiscali.co.uk)

# THE VILLAGES OF SWALEDALE

The villages in Swaledale are truly special places, each with its own particular stories to tell. Local architecture, churches and literary institutes evoke times past and provide the visitor with much to learn and explore. The footpaths, bridleways and nearby trails also provides visitors with ever changing views of the landscape from the craggy ledges of Fremington Edge to the pastoral sweep of Gunnerside meadows.



## GRINTON

Grinton (green pasture in old English) grew up around the bridge, the first place above Richmond where the river Swale, could be forded. Blackburn Hall, next to the church, dates from 1635, although the first reference to a village here was in 1086.

St Andrew's Church, known as the Cathedral of the Dales, was for centuries the only church in upper Swaledale, with bodies being carried from the upper dale down along the "Corpse Way" for burial. The Bridge Inn, a 15th century former coaching Inn offers a warm welcome to all who pass by.

## FREMINGTON

A hamlet, tucked between Grinton and Reeth, Fremington today is recognisable by the landmark of Draycott Hall in the lower part of this picturesque settlement and looking upward, the spectacular craggy Fremington Edge entices walkers and cyclists to scale its heights. From this dominating and



impressive hillside, views of Swaledale are breathtaking and memorable.

## HEALAUGH

(Pronounced he-law) this hamlet is just one mile west of Reeth. The name comes from the old English hea+leah meaning high clearing or wood. At one time Healaugh featured a school, chapel, post office and shop but none remain. In dry weather, the stepping stones below the village allow the

River Swale to be crossed to make an easy circular walk along the banks of the river from Reeth.

## LOW ROW

Feetham, Blades, Smarber and Low Row, small villages and hamlets,

are now collectively known as Low Row in the parish of Melbecks. It was once a thriving mining and textile community with three pubs, two churches, two chapels, two shops, two schools, and a workhouse. The village still has two of its churches, one pub



- the Punch Bowl (sister pub to the CB Inn in Arkengarthdale) and Hazel Brow Farm which is open to visitors.

## GUNNERSIDE

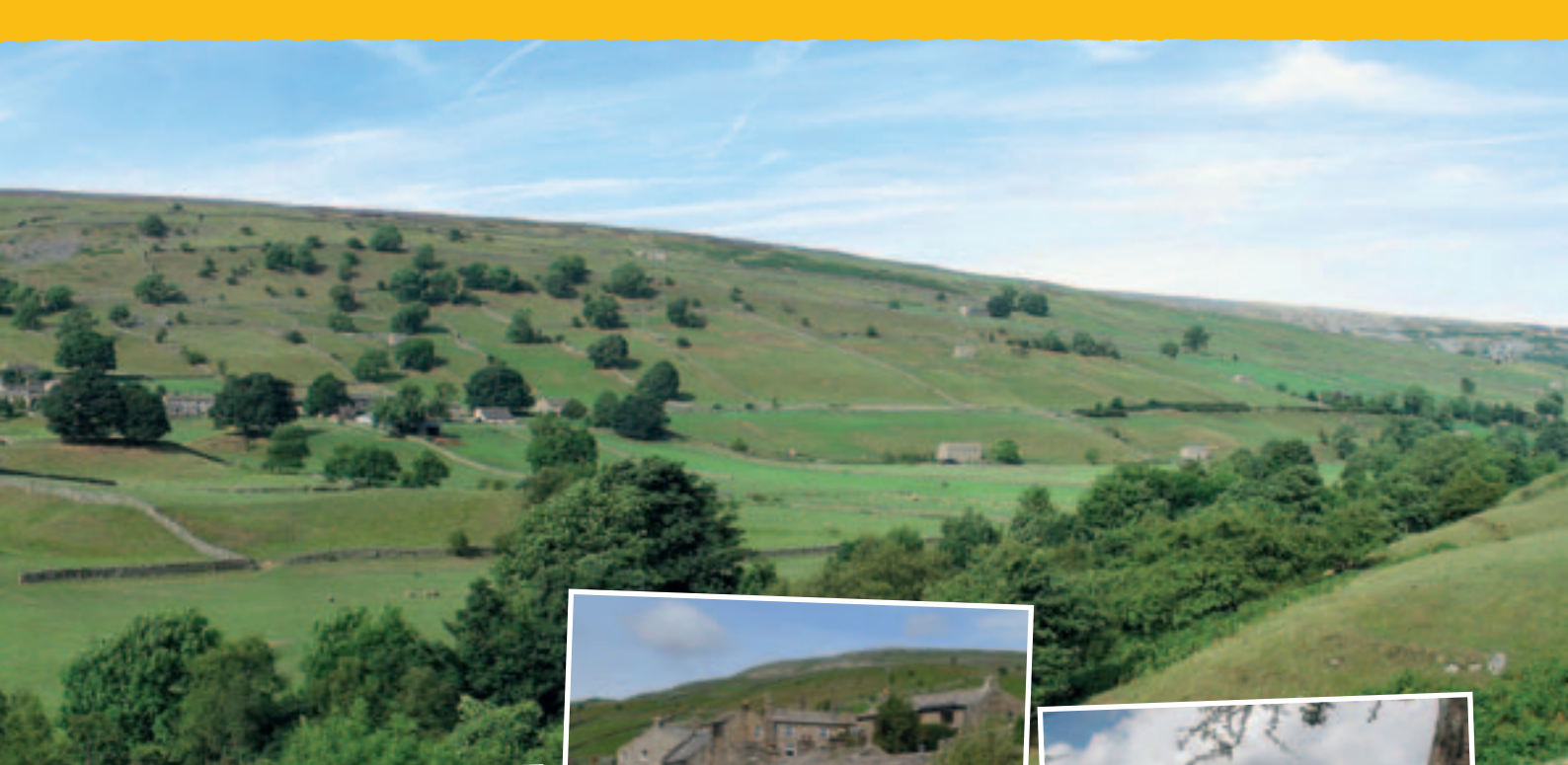
Named after the Viking, Gunnar, the village thrived during lead mining times when people worked, played and prayed hard. Miners would walk up Gunnerside Ghyll to work, women as well as men, knitting socks as they walked.

The huge Methodist Chapel is testament to the lead mining heyday, where a large gallery accommodated the many miners and their families who lived in the village and surrounding area.

A walk up Gunnerside Ghyll reveals the extensive ruins of the lead mining industry.

## MUKER

Muker often features in photos and paintings and is regarded as of the loveliest villages in Swaledale. The former school is now a gallery and craft shop, next to Swaledale Woollens which sells knitwear knitted locally from Swaledale sheep wool. Opposite the



Victorian Post Box, Thwaite © Phill Lee. Muker Silver Band © Muker Silver Band

Farmers Arms pub is one of four listed buildings, a telephone box designed by Sir Giles Gilbert Scott.

The Church of St Mary the Virgin, first built in 1580, may originally have had a thatched roof and at one time had a gallery running the full length of the church, and is listed, along with the old font opposite its front door. Until this church was built, corpses in upper Swaledale had to be carried miles down the dale to St Andrews at Grinton along the "Corpse Way". Various "corpse" stones still exist, where the men carrying the body would rest, one of the easiest to find being at Ivelet Bridge, between Gunnerside and Muker.

The last listed building in the village is the pretty Victorian Literary Institute with railings which was built in 1867 and at the time contained 600 books. It is now the home of Muker Silver Band, who rehearses there twice a week.

## THWAITE

Thwaite is the birthplace of Richard and Cherry Kearton who produced the first nature book to be illustrated

entirely with photographs. The house where the brothers were born has a pretty decorative lintel over the door, with their dates of birth and initials carved there. The Kearton Country Hotel is named in honour of the brothers where visitors can relax with a coffee or home-cooked meal and admire the views towards Kisdon hill.

From here you can take the stunning walk over Great Shunner Fell into Wensleydale, ending up at Hardraw (eight miles of amazing views!). As an alternative there are three different footpaths to Muker, finishing with suitable refreshments at the Farmers Arms or Muker Tearooms.

A few miles over the top towards Hawes brings you to the Buttertubs, a group of fluted limestone potholes, supposedly named from times when farmers would rest there on the way to and from Hawes market. They would lower their butter down into the potholes to keep it cool.

## KELD

Keld is a very special place; at Keld "a sundial records the hours but time is measured in centuries" (Alfred Wainwright).

Almost completely hidden in a deep cleft in the Pennines, in one of the highest and remote parts of the Yorkshire Dales, lies the village of Keld.

The upper dale's dramatic moorland, miles of dry stone walls, meadows, field barns and waterfalls all contribute to this extraordinarily beautiful landscape. The hay meadows in this area are famous for their abundance of wild flowers in early summer also Keld lies at the centre of the highest concentration of waterfalls in England.

It is a combination of traditional farming methods and the hardy Swaledale sheep that graze the upland fells which are largely responsible for shaping and maintaining the landscape seen today. The Swaledale sheep with its distinct black face, black and white legs and long tail is particularly robust and is bred to thrive in the harsh conditions on the high fells and is as important to the dale as the people who live here.

Keld is a historic place, a simple place, a peaceful place. Whether you come for the scenery, the wild life, the wide open spaces or the solitude you will always be welcome.

Muker town; Gunnerside Smithy © Phill Lee. Keld © Keld Resource Centre.

# MUKER SHOW

TRADITIONAL YORKSHIRE SHOW

SHEEP, CHILDREN'S GAMES, FELL RACE & MORE.

**WEDNESDAY  
3 SEPTEMBER**

**MUKER VILLAGE  
SWALEDALE  
STARTS 10.00AM**

Sec: Kathy Scott 01748 886564

## Keld Resource Centre

Welcome to the Keld Resource Centre in Upper Swaledale

*A charitable trust working with the community to enable more people to experience this special place*



### **The Manse Holiday Cottage**

Spacious, 4 star holiday cottage in the heart of Keld Village. A place to relax & unwind surrounded by breathtaking scenery. Enjoy walks, waterfalls & cycle routes straight from the cottage door.



### **Keld Countryside & Heritage Centre**

Formerly the stables in the Literary Institute and now an information centre telling the story of Keld & dales folk. Guided walks, talks & community events take place throughout the season. Open all year. A warm welcome awaits during the Tour de France weekend

For more details of The Manse, Events taking place from the Countryside & Heritage Centre and to find out more about the work of the Keld Resource Centre Project please visit

[www.tkrc.org.uk](http://www.tkrc.org.uk)

Darren and Emily welcome you to:

# THE FARMERS ARMS

## MUKER

### UPPER SWALEDALE

**A traditional dales pub in the heart of  
spectacular walking country.**

**Serving good homemade food everyday  
12pm-2:30pm and 6pm – 8:30pm**

**Well-kept Local Real Ales**



**Dogs and Muddy Boots Welcome**



**Open Fire & Stone Flagged Floor**



**Holiday Apartment (Sleeps 2)**



### Keep Updated!

For details of our events, opening times, menu changes, late availability offers etc.

Visit our Website:

[www.farmersarmsmuker.co.uk](http://www.farmersarmsmuker.co.uk)

Find us on Facebook:

[www.facebook.com/thefarmersarms](https://www.facebook.com/thefarmersarms)

Follow us on Twitter:

[@muker\\_swaledale](https://twitter.com/muker_swaledale)

**Tel. 01748 886297**



## Visitor Centre, Masham

### The Yorkshire Beer Experience

*Bistro - Bar - Brewery Tours - Sheepy Shop*

The Black Sheep Brewery Visitor Centre is the ideal place for an interesting and alternative day out in the Yorkshire Dales. Regular 'shepherded' day and evening tours of the Brewery allow guests to experience the traditional brewing processes through to the end product - a sample of the award-winning ales in the Baa...r.



Enjoy the sunshine in our b-ewe-tiful beer garden with a pint of Velo. A fresh, free wheeling 4.2% ABV, Pale Ale with cascade hops and heaps of orange and coriander with a dry, bitter finish. Brewed to celebrate the Worlds Most Famous Cycling Race going past our Brewery this summer. Available throughout June - August

Black Sheep Brewery, Wellgarth, Masham, Ripon, North Yorkshire, HG4 4EN

Tel: 01765 680101



[www.blacksheepbrewery.co.uk](http://www.blacksheepbrewery.co.uk)



# SWALEDALE'S CYCLE REVOLUTION

**“WE’VE NEVER SEEN ANYTHING LIKE IT IN THIS DALE,  
IT’S THE OLYMPIC GAMES COMING THROUGH SWALEDALE...”**

**S**waledale is in the grip of a cycling revolution which is gathering pace by the day and its impact will be felt for years to come. The dale is already recognised as one of England’s premier mountain biking areas with established trails across breathtaking countryside.



Similar status is now being afforded among road cyclists as they test out the first stage of this year’s Tour de France’s Grand Depart through Yorkshire. According to Stuart Price, who established the Dales Bike Centre at Grinton in 2008, road biking is leaving off-road trailing in its wake.

“This is just the start. We’ve got all these people coming riding in Swaledale off the publicity that’s going around, once the stage has come through it’s going to go mad,” he said.

Up to 30,000 people are expected to use vantage points on Grinton Moor to watch around 200 top riders pass through in the world’s biggest annual sporting event. “We’ve never seen anything like it in this Dale, it’s the Olympic Games coming through Swaledale, and we’ll never see anything like it again,” said Stuart.

## **GET CLOSER BY BIKE**

Cycling is a great way to see the countryside. You get much closer to the landscape and countryside and whatever your level of fitness or experience, Swaledale has something to offer. It’s true, there are plenty of hills around, but most of the roads are generally quiet and there are lots of good tea shops and pubs conveniently placed along the Dale that give a good excuse for a rest and refreshment if needed.

If you’re more experienced, why not trace the route of the Grand Depart for yourself and try the Tour De Dales – starting in Grassington and covering the Stage 1 route through the National Park to provide a fantastic 78 mile circular route.



ing cam

It goes without saying that whatever your level of experience, getting the right bike is vital and getting the right advice makes all the difference. Arthur Caygill is North Yorkshire's only manufacturer of hand-made frames, and one of the area's largest stockists of major brands. Established in Richmond for the last 30 years, their team of experts advises everyone from beginners to professionals on all aspects of biking from selecting the right bike to nutrition and training. With six on-site mechanics, they can offer an unrivalled quality of service.

Whether you're looking to take up cycling or you're already on your bike, The Yorkshire Dales National Park website [www.cyclethedaes.org.uk](http://www.cyclethedaes.org.uk) has downloadable maps, tips, ideas and useful advice. If you'd like to know about mountain biking, there's also a dedicated website [www.mtbthedaes.org.uk](http://www.mtbthedaes.org.uk)

Arthur Caygill Cycles  
**Caygill**  
 the choice of national champions



**Road, mountain and leisure riders all welcome!**

- Major stockists of leading brands
- North Yorkshire's only manufacturer of frames – made to measure in our own workshop
- Established 30 years
- Six trained mechanics on site
- Up to 12 months free servicing on new bikes

**“The sale is only the start. Our after sales service is second to none. We give everyone, from beginners to pros the right advice to get the best out of their bike including nutrition, fitness, and turbo training.”**



**Limited Edition Tour De France frame designed for our 30th anniversary**

**Tel 01748 825469** [www.arthurcaygillcycles.co.uk](http://www.arthurcaygillcycles.co.uk)

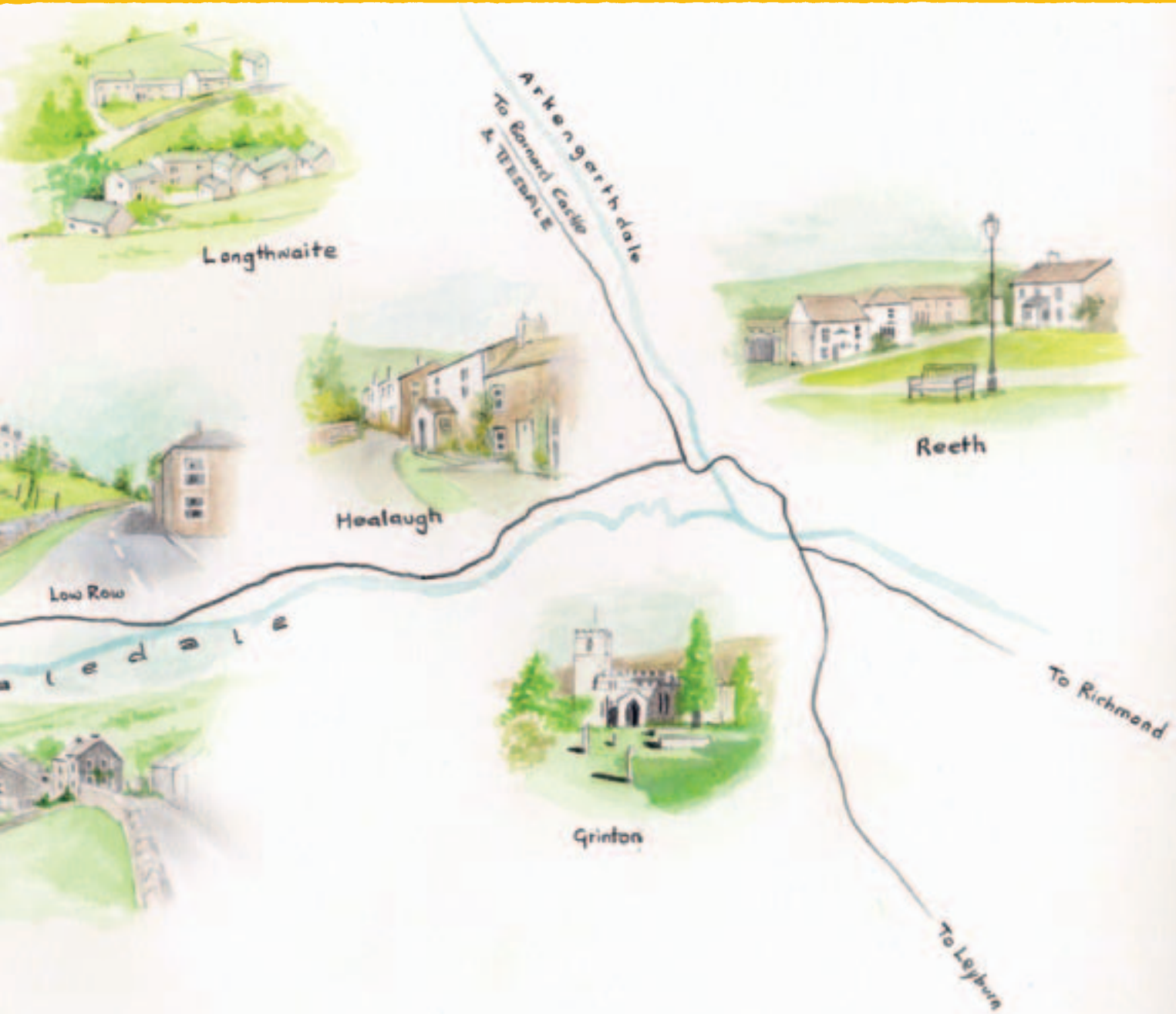
ARTHUR CAYGILL CYCLES, BOROUGH ROAD, GALLOWFIELDS TRADING ESTATE, RICHMOND, NORTH YORKSHIRE DL10 4SX

# THE GRAND DEPART ROUTE THROUGH SWALEDALE

5TH JULY 2014







## WHERE TO SEE THE TOUR AND WHEN...

The dramatic descent from the Cote de Buttertubs into Swaledale will give everyone the first sight of the caravan around 12.36 followed by the peloton around 14.22. The following times are when the caravan and then the peloton are scheduled to arrive through Swaledale\*

NOTE: All times are approximate and are subject to change.

<b>BUTTERTUBS</b>	<b>12:36</b>	<b>14:22</b>
<b>MUKER</b>	<b>12:46</b>	<b>14:31</b>
<b>GUNNERSIDE</b>	<b>12:53</b>	<b>14:37</b>
<b>STRANDS</b>	<b>12:55</b>	<b>14:39</b>
<b>LOW ROW</b>	<b>12:58</b>	<b>14:41</b>
<b>HEALAUGH</b>	<b>13:04</b>	<b>14:48</b>
<b>REETH</b>	<b>13:07</b>	<b>14:50</b>
<b>GRINTON</b>	<b>13:10</b>	<b>14:53</b>
<b>GRINTON MOOR</b>	<b>13:15</b>	<b>14:57</b>

# THINGS TO SEE AND DO IN SWALEDALE

Walker and cyclist on Airedale Road, Bradford © Greg Marshall.



## WALKING

Swaledale is truly a walker's paradise with hundreds of routes to choose from. The famous

Coast to Coast and Pennine Way long distance footpaths both cross the Dale and meet at Keld whilst for the more leisurely walker the hay meadows and riverside walks offer easier options.

## FELL RUNNING

Fell running has long been associated with Swaledale and the annual shows at Muker and Reeth both feature races for all ages. At Reeth Show the race traditionally goes up Fremington Edge overlooking the show field. The competitors are part of the British Open Fell Runners Association with races for all classes. Each year a prize is offered for breaking the course record.

## THE SWALEDALE MARATHON

The annual Swaledale Marathon passes through some of Swaledale's finest scenery. The 23 mile course is a fell run / challenge walk event - competitors must navigate themselves and complete the course within 10 hours. It takes place in May/June and has been organised by Swaledale Outdoor Club since 1979. In 2013 over 440 people completed this popular and demanding race.

## THE SCOTT TRIAL

The Scott Trial is a British motorcycle trials competition run over an off road course in Swaledale of approximately 70 miles. One of the most challenging trials events in the UK its appeal is to clubman riders as well as international professional riders. The Scott raises money for the "Scott charities", a range of local non-profit making organisations and is organised by Richmond Motor Club.

## THE SWALEDALE FESTIVAL

Starting at the Spring Bank Holiday weekend at the end of May the Festival has concerts and events in chapels and churches, village halls, pubs, castles and barns, in the beautiful north Yorkshire Dales of Swaledale, Wensleydale and Arkengarthdale. The Festival also runs a programme of guided walks, many themed on topics such as lead-mining, archaeology, wild flowers and geology.

The 2015 Festival runs from 23 May to 6 June. Black Dyke Band is already confirmed, as is a choral workshop with Bob Chilton.

So start your summer at the Swaledale Festival, and enjoy live music in this beautiful corner of the world. PS - you don't have to wait for next year.

Be sure to visit the Festival's Tour de France tribute in the Orchard Garden of Hudson House, in Reeth. Re:Cycle by Michael Kusz is a sculpture made from bicycle spares collected by local school children.



Vegetables at Muker Show © Phil Lee



Sugarcraft Wallace & Gromit at Reeth Show © Phil Lee

## REETH SHOW

Reeth Show is a traditional Yorkshire Dales agricultural show held every year for one day at the end of August. It boasts a great selection of trade and entertainment stands for all the family. The show's largest marquee contains the hugely well attended horticulture and produce classes as well as walking sticks, handicrafts, handwriting, paintings and photography competitions. The main show ring hosts large numbers of the customary horse and pony classes throughout the day including the more colourful categories of Open Driving Competition and Mounted Fancy Dress. Every year the main show ring also hosts a special feature. Elsewhere in the show field the sheep section showcases the best quality sheep breeds in the Dale, next to which there is a display of vintage tractors competing for best in show and during the day open quits and dry stone walling competitions take place.

## MUKER SHOW

This is a small and friendly traditional agriculture and horticultural show blessed with an enviable location – the meadows in Muker village with stunning views up and down the dale. The show is usually held on the first Wednesday of September. In addition to the expected events and classes Muker show also holds a fell race, sheepdog trials and a demonstration of dry stone walling.



## ARKENGARTHDALE

Arkengarthdale is a beautiful, tranquil dale about two miles from Reeth. The renowned CB Inn and The Red Lion at Langthwaite are both located in the dale which is also home to some pretty and little visited villages with unusual names including Booze, Raw, Whaw and Arkle Town.

### VISITOR CENTRES

The two visitor centres in the Dales are a great source of up to date information.

Hudson House in Reeth is a resource centre for local people and visitors to Swaledale and Arkengarthdale. Telephone 01748 884485 or visit [www.hudsonhouse.org](http://www.hudsonhouse.org)

Keld Resource Centre in Keld tells the heritage of Keld. The Centre is free and open to the public between 08.00 and 21.00 (summer) and 08.30 to 17.00 (winter). [www.tkrc.org.uk](http://www.tkrc.org.uk)

For more information about things to see and do in Swaledale and Arkengarthdale visit [www.reeth.org](http://www.reeth.org) [www.swaledale.net](http://www.swaledale.net) [www.2dales.org](http://www.2dales.org)

You can also search and book a variety of activities and events online at [www.dalesbound.co.uk](http://www.dalesbound.co.uk)

(Top) Reeth Show; The Powder House, Arkengarthdale © Phil Lee

# Heather Ritchie

Rug maker

Open studio 10am to 4pm  
Thursday 3<sup>rd</sup> to Tuesday 8<sup>th</sup> July

Greencroft, Reeth

(Top of the green, left of the Burgoyne Hotel)

[www.rugmaker.co.uk](http://www.rugmaker.co.uk)



# Dragonridgehills

Art Craft and Jewellery



Situated on the green in Reeth this historic building, once the porter's lodge to the poorhouse houses a collection of work from one creative dales family as well as carefully selected precious gifts.

E: [Joanna@Dragonridgehills.demon.co.uk](mailto:Joanna@Dragonridgehills.demon.co.uk)  
T: 01748 880153

# Ginger Tree

Holistic Health & Beauty

- Health & Wellbeing Therapies
- Organic Beauty Treatments
- Special occasion Hair & Make Up
- Peaceful retreat at Aske Hall, near Richmond

07530 602209

[www.gingertreebeauty.co.uk](http://www.gingertreebeauty.co.uk)  
Facebook:gingertreebeauty



SPLENDID SELF CATERING ACCOMMODATION



## LOW ROW VILLAGE, SWALEDALE

Spacious accommodation for 13/14 people.  
Ideal for family get togethers and celebrations.

[www.hazelbrow.co.uk](http://www.hazelbrow.co.uk)  
email or phone to book  
[info@hazelbrow.co.uk](mailto:info@hazelbrow.co.uk)  
Tel: 01748 886224

# EATING OUT

After working up an appetite through a hard days walking, cycling or just sightseeing one can feel justified in tucking in to some well-cooked food. Yorkshire has been leading the way in celebrating locally sourced, well produced ingredients and nowhere is this more in evidence than in the hotels, restaurants, team rooms and pubs in Swaledale. Whether sweet or savoury you can be guaranteed that food is produced with a pride and passion that does justice to the quality of the ingredients. In an area dominated by sheep farming, it's no surprise that local lamb is particularly tasty, whilst the traditional delicacy of Wensleydale cheese and fruit cake is a regular on most tea shop menus.

The Charles Bathurst, or CB Inn as it is known by the locals, has stood on the same site in Arkengarthdale since the 18th century offering a finer quality of accommodation in the area with excellent

food and quality service. The CB is a welcome sight for walkers with well-worn wooden floors and hardy boot racks. The owners have put a firm focus on producing quality food at reasonable prices, aiming to serve deliciously fine fare.

The CB has 19 rooms each individually furnished with quirky features and antique furniture giving a warm country feel. The bar was sympathetically renovated with the help of local craftsmen and offers a warm welcoming and

relaxed atmosphere with open fires, wooden beams, and a cast of local characters, offering a heartening welcome after a day in the dales. The Charles Bathurst Inn is true to its roots and is the perfect base to explore this beautiful part of the dales.

In Grinton The Bridge Inn has plenty of bustle and bonhomie, offering locals and visitors alike a warm welcome and a great menu that includes locally shot game, fresh fish and a selection of traditional favourites such as steak and ale pie and sausage and mash. Further up the dale at Muker, The Farmers Arms with its flag stone floors serves up hearty fare for those heading along the Coast to Coast or staying local.

The Kings Arms or 'Middle House' occupies a majestic spot overlooking Reeth village green and is worth a visit to sample great food and ales next to its huge inglenook fireplace.



Couple eating out in Reeth © Phil Lee

For lighter refreshments, The Copper Kettle in Reeth is cosy and inviting and upholds the glorious tradition of Yorkshire tea rooms, serving great cakes including the aforementioned Wensleydale cheese and fruitcake.

Those with a sweet tooth must visit Cuckoo Hill View Ice Cream Parlour, also in Reeth - specialising in real dairy ice cream made by Brymor on the farm at Jervaulx. There are 16 delicious flavours to choose from and you can also enjoy teas, hot chocolate, freshly ground coffee, lattes and cappuccinos.

Parts of this article were originally published in *The Harrogate Advertiser* in January 2014.



**This historic inn, which featured as the pub in *All Creatures Great and Small*, is nestled at the heart of some of the most spectacular scenery the Yorkshire Dales National Park has to offer.**

**With stone flagged floors, high beams and a large inglenook fireplace, we offer excellent food with cask conditioned ales and wines in a most stunning rural location.**



**The Kings Arms, Main Street, Askrigg, Leyburn, North Yorkshire, DL8 3HQ  
T: 01969 650113 E: [info@kingsarmsaskrigg.co.uk](mailto:info@kingsarmsaskrigg.co.uk)  
[www.kingsarms-askrigg.co.uk](http://www.kingsarms-askrigg.co.uk)**



# East Mill House

## Bed & Breakfast and Art Studio

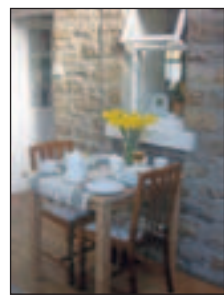
New owners John and Jane Hunter would like to introduce East Mill House, which is now open to guests as a bed and breakfast, along with John's Art Studio—where you can view and purchase his artwork, or just watch the artist at work!

East Mill House is ideally located for touring the Dales; being in the delightful village of Grinton, Swaledale, just 1 mile from Reeth and 10 miles from the historic town of Richmond, along with the market towns of Leyburn, Hawes and Barnard Castle. Walks can be taken directly from the doorstep with pretty flower filled meadows in the springtime and the surrounding countryside with its historic and distinctive remains of the former lead mining industry, the Swale Way and Coast to Coast long distance paths also passes close by, as well as the Herriot and Inn way.

East Mill House has been designed with relaxation in mind, there is a sun room where you will be served a traditional freshly cooked Yorkshire breakfast looking out onto a peaceful large terrace garden.

There are two double-rooms available, both having en-suite shower rooms with under-floor heating, one overlooking St Andrew's Church (the 'Cathedral of the Dale') along with beautiful views across the valley, and the other south-facing overlooking the garden.

With our cosy and comfortable rooms you can be sure of a relaxing stay in this idyllic location.

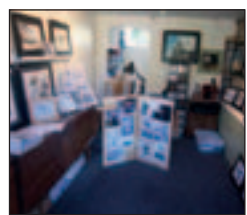
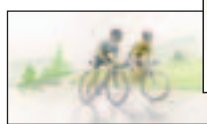


For further details and booking form please contact John and Jane by:

E: [jhunter.41@btinternet.com](mailto:jhunter.41@btinternet.com)

M: 07732 122 817

W: [eastmillhouse.co.uk](http://eastmillhouse.co.uk)



Artwork website: [HunterArt.co.uk](http://HunterArt.co.uk)

East Mill House, Swale Hall Lane, Grinton, North Yorkshire, DL11 6HL

# Own your own piece of Swaledale...



## from £26,000

- The ONLY holiday lodges for sale in Swaledale
- Beautiful and unrivalled riverside location at the head of Swaledale yet minutes from Richmond
- Bespoke lodges, built to order
- All inclusive price including all furnishings
- Superb specification including log burner, hot tub
- Buy to let opportunities - lodges can rent for up to £800 per week
- Open since 1946, Swaledale's longest established, family owned park

**Try before you buy**  
- visit us for a two night break from only £60 per person per night, and see for yourself or call in and see us for a no obligation chat.

*Affordable luxury in Yorkshire's National Park*

Telephone 01748 823106

[www.swaleviewpark.co.uk](http://www.swaleviewpark.co.uk)

Showhome open daily from 9.30 to 5pm

[info@swaleviewpark.co.uk](mailto:info@swaleviewpark.co.uk)

# A ROOM WITH A VIEW? GUARANTEED!

Where to stay in Swaledale? A converted shooting lodge with stunning views or a cosy B&B on a working farm? Or how about a riverside camping and caravan site that's also close to a great village pub? Whether you have had a hard day road biking or just a gentle stroll over the fields, you can pick a place to stay that suits your preference and your pocket. And wherever you choose, in this part of the world, a great view is pretty much guaranteed.

There's a B&B and hotel to suit everyone, from smart and chic to homely and cosy. Either in the heart of a village, in a room at the pub or, if you fancy, you can choose a stay on a local sheep farm; it really brings you closer to rural life but without the compulsory dawn start!

Caravan and camping holidays in Swaledale all start with stunning views - there's several located in the Dale so you can vary your pitches and experience the different villages



and landscapes all in one trip. A self-catering holiday in Swaledale could see you gazing out of your window onto hillsides dotted with sheep or overlooking Reeth village green.

If you decide to hostel in Swaledale you can enjoy spectacular views from Grinton Lodge YHA, an impressive 200-year-old former shooting lodge. Choose from cosy rooms or YHA's first ever camping pods, situated in the wooded paddock with views over the surrounding moorland. The YHA also has other great hostels in Yorkshire including

Malham, a little further south. Surrounded by classic limestone scenery and flower-rich hay meadows, this recently renovated hostel provides an ideal base for activity breaks. Mountain bikers will relish the challenges and delight of the hilly terrain. There's also the YHA hostel at York, a beautiful Victorian building on the banks of the Ouse that's undergone a £2 million renovation.

But if your dream is to spend more time in Swaledale, buying a second home here is now affordable. Swaleview Park offers the only holiday homes and lodges for sale in Swaledale, from only £26,000. With a 12 month licence and an amazing location alongside the River Swale, it's now possible to make your dreams a reality.

Wherever you stay, you'll be guaranteed a warm welcome from people who have a real passion for living here and will want to make your visit one that you will never forget.

Muker Meadows © Phil Lee



[www.alpynecottagesreeth.co.uk](http://www.alpynecottagesreeth.co.uk)

stylish 4 star apartment, eco hot tub, bike store, dog friendly **07791 556114**



## Welcome to Stay Swaledale

We look forward to meeting you at our Farmhouse B&B or Holiday Cottage.



### Hillcrest Cottage Low Row

A fabulous holiday cottage in the very heart of Swaledale



### Pry House Farm Keld

A traditional farmhouse B&B on a working hill farm at the top of the dale

*Both properties offer:*

Secure Cycle Storage

First class accommodation

Spectacular views of the countryside

Visit us at [www.stayswaledale.co.uk](http://www.stayswaledale.co.uk)



5\* luxury accommodation in Reeth with spectacular views across Swaledale from all our five south facing ensuite bedrooms.

Cambridge House has one of the most enviable positions in the Yorkshire Dales, perfect for walkers and cyclists alike, with drying facilities and secure cycle storage.

Start your day with one of our award winning breakfasts, relax and enjoy afternoon tea and homemade cake in our south facing conservatory.



CAMBRIDGE  
• HOUSE •

Tel: 01748 884633 or 07736 674285.  
info@cambridgehousereeth.co.uk  
www.cambridgehousereeth.co.uk



**Quality holiday cottages in the heart of the Yorkshire Dales**

Book one of our gorgeous holiday cottages before the 31st January 2015 to be entered into a free prize draw to win £200 off your next holiday in the Yorkshire Dales.\*

**WIN £200 OFF YOUR NEXT HOLIDAY**



To view our full range of holiday cottages please visit [www.holidayhomeyorkshire.co.uk](http://www.holidayhomeyorkshire.co.uk).

**01748 900 420 @YorkshireHols**

\*Visit [www.holidayhomeyorkshire.co.uk/tdf2014](http://www.holidayhomeyorkshire.co.uk/tdf2014) for T&Cs

## BRAESIDE HOLIDAY COTTAGE



**Reeth Village Centre.**

**Three bedroomed traditional Dales cottage sleeps 8.**

Refurbished to a high standard, retaining its old pine doors, with oil fired central heating and double glazing throughout. Three bedrooms and two bathrooms, open views from the front garden over the village green, and most rooms face the west, and enjoy the afternoon and evening sun.

No smoking and sorry no pets.

For prices, enquiries and bookings please contact John & Liz Austin:

**Tel: +44 (0)114 2467599**  
**austin516@btinternet.com**  
**www.braesidereeth.co.uk**



## Langthwaite, Arkengarthdale

Featured in several films and TV series...



## THE RED LION INN

Books and maps for sale • Bar snacks all year round

Licensee: Mrs R. Hutchinson F.B.I.I.

Email: [rionlangthwaite@aol.com](mailto:rionlangthwaite@aol.com)

Tel: 01748 884218

Fax: 01748 884133

[www.redlionlangthwaite.co.uk](http://www.redlionlangthwaite.co.uk)



# Wraycroft Cottages

Three holiday cottages in Reeth, Swaledale  
situated on a very special two acre site



Close to Reeth centre but an oasis of tranquility.  
Private parking, cycle storage, stunning views.  
Very large garden with private river frontage.  
All amenities together with open fires and Wi-Fi.

Wraycroft, Back Lane, Reeth, DL11 6SU

Email: [wraycroft@me.com](mailto:wraycroft@me.com)

Web: [www.reethcottages.com](http://www.reethcottages.com)

Phone: 01748 884254

Mobile: 07432 200537



**DO CALL TO MEET US AND LOOK AROUND**

  
**EXPERIENCE THE  
THEAKSTON TOUR THIS YEAR...**



*Visit Paradise, the aptly named home of  
the Theakston Brewery Visitor Centre!*

E [bookings@theakstons.co.uk](mailto:bookings@theakstons.co.uk)

f Theakston Brewery

T 01765 680000

t Theakston1827

Theakston Brewery, Masham, North Yorkshire, HG4 4YD

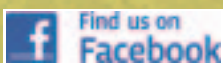
## THE KINGS ARMS HOTEL



The Kings Arms Hotel  
High Row  
Reeth  
North Yorkshire  
DL11 6SY  
Tel: 01748 884259

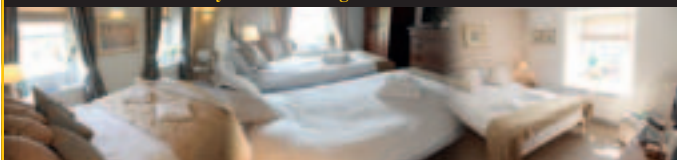
Traditional Country Pub • Superb Cask Ales  
• Freshly made Home Cooked Food  
• Ideal resting place on the route of many walks  
& cycling routes • Dog Friendly  
10 en-suite rooms with stunning views  
across Swaledale

[www.thekingsarms.com](http://www.thekingsarms.com)  
[enquiries@thekingsarms.com](mailto:enquiries@thekingsarms.com)



Special brochure offer quote TDFKAH14 to receive £10 off per person  
staying with us. Available for 1 visit.

Valid until end of January 2015 excluding 31st Dec & 1st Jan



## ORCHARD CARAVAN PARK



Situated in an Apple orchard beside the River  
Swale, just a few minutes walk from the delightful  
village of Reeth.

Static caravans for hire. Seasoned tourers, motor  
homes, touring caravans and tents.

An ideal location for walkers.

REETH • RICHMOND • NORTH YORKSHIRE • DL11 6TT

**01748 884475**

[peter.daly7@btinternet.com](mailto:peter.daly7@btinternet.com)

# WE CAN HELP YOUR BUSINESS GROW...

Over 25 years experience in sales, marketing and business development.

We help businesses grow with focused, measureable advice and a friendly no nonsense approach that achieves results.

Clients include:



## fletcher & lee

Marketing • Media • Sales  
[www.fletcherandlee.co.uk](http://www.fletcherandlee.co.uk)

The Smithy, Grinton, North Yorkshire DL11 6HJ

**Tel: 01748 884789**



creative marketing solutions



we do logos & branding, promotional advertising & literature, photography and more

[www.ambientcreative.com](http://www.ambientcreative.com) 01325 364144

# The Forbidden Corner

... is one of England's most recent follies.

A unique labyrinth of tunnels, chambers, follies and surprises created in a four-acre garden in the heart of the Yorkshire Dales.

A day out with a difference which will challenge and delight children of all ages. Why not take a break in this enchanting environment? In one of our four self catering accommodations ideal for families & groups of visitors, they are situated in beautiful Coverdale with a free day pass with all stays.

**Visit the Corner Café**  
with its new menu and freshly made sandwiches, soups, barista coffees and delicious award-winning pies and cakes

**Self Catering Holiday Accommodation available**

**Admission is by pre-booked tickets only.**

**Opening times for 2014**

Every day from 1st April - 2nd November & then Sundays until Christmas  
Mon - Sat 12 noon until 6pm  
Sundays & Bank Holidays 10am until 6pm

To reserve your ticket please telephone:

**01969 640638 - [www.theforbiddencorner.co.uk](http://www.theforbiddencorner.co.uk)**

Tuppill Park Estate, Coverham, Middleham, Leyburn, North Yorkshire DL8 4TJ



# Bolton Castle

Bolton Castle  
Nr Leyburn  
North Yorkshire  
DL8 4ET

Enjoy the Ultimate Medieval Experience in the historic heart of Wensleydale.

This magnificent medieval fortress is steeped in history and has something for all the family to enjoy including;

- Spectacular Falconry experience
- Archery Demonstrations
- Childrens' costumes, trails and activities
- Wild Boar Park
- Medieval gardens and maze
- Wonderful tearoom



**Opening times: Open daily 10am – 5pm from 15th February until 2nd November 2014**

Please note we will close early on occasional Saturdays due to weddings. Please check in advance.

**Call 01969 623981 or visit [www.boltoncastle.co.uk](http://www.boltoncastle.co.uk)**



**SWALEDALE**

Swaledale Mountain Rescue Team provides a voluntary mountain and cave rescue service within the Swaledale and Wensleydale areas of North Yorkshire. Forty highly trained volunteers from the local area are available to be called out, any time day or night, in all weather conditions, 365 days per year.

The team is reliant on donations to maintain its operational capability and its fleet of three 4x4 all terrain ambulances. Typically the team responds to about 30 incidents per year which can range from lost and injured people on the hills, rivers, and underground caves and mines in our area, to assisting the police in searches for missing people, and assisting the Yorkshire Ambulance Service to reach casualties in periods of bad weather.

Nearly 100 km of the Stage 1 Tour de France route is in our area. With our colleagues from Cleveland Mountain Rescue Team we are providing an emergency rescue service over the race weekend on the two most remote parts of the route - the Butter Tubs pass and Grinton Moor.

You can find out more about what we do by following us on Facebook or visit our website [www.swaledalemrt.org.uk](http://www.swaledalemrt.org.uk)



The Great North Air Ambulance Service has grown to become a leading healthcare charity, operating three helicopters in the North East, North Yorkshire and Cumbria. The charity does not receive government or lottery funding and it relies on the generosity of the public to raise the £4million needed to run the service each year. Every month GNAAS respond to hundreds of call outs, the helicopters are never more than a 15 minute flight from the nearest hospital, making it a truly crucial service for those needing a rapid response.

The service offers the highest level of pre-hospital care and the aircraft carries cutting edge medical equipment, as well as specialist trauma doctors and highly trained paramedics. Essentially, the charity brings the emergency ward to the scene.

GNAAS Trading Company covers all internal costs so every penny donated by the public goes towards the aircraft, the equipment used and the crew. [www.greatnorthairambulance.co.uk](http://www.greatnorthairambulance.co.uk)

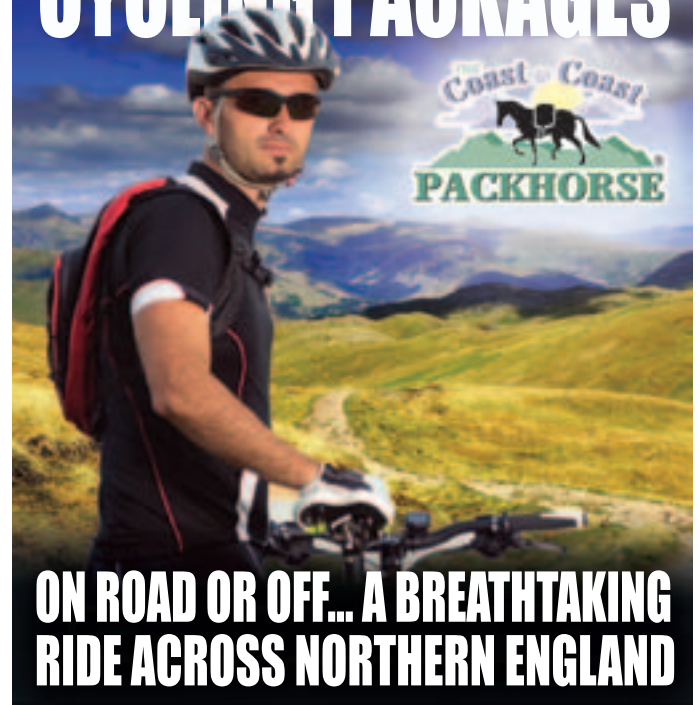
## ENJOYING THE GRAND DEPART

**This is the first time that the Tour De France has visited The North of England, so here's some top tips for enjoying your visit and getting the best out of this unique and historic event.**

1. Choose one place to view the race. Swaledale is a narrow valley with only one main road in and out, so moving around once the race starts won't be possible.
2. Wherever you plan to watch the Tour, get there early! Road closures will obviously be taking place so check [www.richmondshire.gov.uk](http://www.richmondshire.gov.uk) for the latest times.
3. Keep farm gates and access routes clear and use sign-posted parking areas.
4. As you'll probably be in one place for a while, bring everything you'll need – food, clothing, drink etc. The weather can be very changeable so plan for the unexpected.
5. The surrounding heather moorland is susceptible to fire, particularly in dry weather. Avoid using barbecues and smoking near to farmland and the open moor. Discard cigarettes carefully.
6. The dry stone walls are a particular feature of the Dales, many are hundreds of years old. Protect them by walking around them and only using way marked paths and stiles.
7. If you are bringing dogs, they'll need to be under close control and on a lead at all times. You'll also need to bring their food and water too.
8. Take all litter home with you or throw it away in a bin.

## COAST TO COAST PACKHORSE

# CYCLING PACKAGES



**ON ROAD OR OFF... A BREATHTAKING RIDE ACROSS NORTHERN ENGLAND**

Tel: 017683 71777 [www.c2cpackhorse.co.uk](http://www.c2cpackhorse.co.uk)

“Richmond has long been one of Yorkshire's treasures”

Alfred Wainwright, *A Dales Sketchbook*



© Richmond Online

WELCOME TO  
**RICHMOND**  
NORTH YORKSHIRE

Follow all these Richmond attractions on Facebook & Twitter



Unlock the beauty and magic of **Richmond** by visiting our town's numerous attractions including...

### The Station

Film, Food & Art... All day, every day. The latest films, great dining plus artisan food producers in Richmond's beautifully restored old railway station.

[www.thestation.co.uk](http://www.thestation.co.uk)

10% OFF Food & Drink in Seasons Station Restaurant with this ad

**THE STATION**

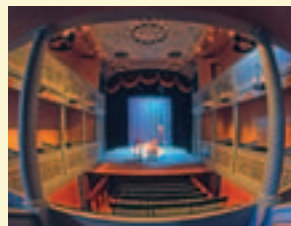


### The Georgian Theatre Royal

Enjoy live performances throughout the year plus captivating backstage tours in Britain's oldest surviving Georgian Theatre.

[www.georgiantheatreroyal.co.uk](http://www.georgiantheatreroyal.co.uk)

Receive a FREE Georgian Theatre Guide Book with all tours when you present this ad



### The Green Howards Museum

Exciting new exhibition space and displays of the regiment's 300 years are currently being developed and due to reopen late Summer 2014.

[www.greenhowards.org.uk](http://www.greenhowards.org.uk)

10% OFF with this ad on all purchases in the Museum Shop in Finkle Street

**MUSEUM REOPENS LATE SUMMER 2014**



**TRADITIONAL ALES BREWED IN THE HEART OF YORKSHIRE**



Our finest Yorkshire ales are brewed on the banks of the River Swale at our six-barrel micro-brewery in the historic Georgian town of Richmond in North Yorkshire.

Visit us and meet the brewer, take a tour and, of course, try our great-tasting beers!

**Opening Hours Mon - Sun 10am - 4:30pm**

**Richmond Brewing Company Limited**

The Station, Richmond, North Yorkshire DL10 4LD

**t: 01748 828 266**

**e: enquiries@richmondbrewing.co.uk**

**www.richmondbrewing.co.uk**

**Tennants**



AUCTIONEERS

## Welcome Le Tour de France to Yorkshire

Fourth generation family business established in the Yorkshire Dales for over 100 years

The Auction Centre, Leyburn DL8 5SG

01969 623780

[www.tennants.co.uk](http://www.tennants.co.uk)

@TennantsAuction

A 2010 HTC-COLUMBIA Scott Addict as ridden by Mark Cavendish during 2010 season To be sold on Saturday 2 August



# RICHMOND

## GEORGIAN GATEWAY TO SWALEDALE

**R**ichmond is a beautiful Georgian town, worth a visit for the well preserved buildings and the cobbled market place, one of the largest in England. Founded by the Normans in 1071, Richmond grew around the castle that still dominates the town and overlooks the River Swale.

It's little changed through the years with some notable historic buildings including the Georgian Theatre Royal; Britain's oldest working theatre in its original form. Built in 1788, the theatre is a thriving community playhouse and a living theatre museum. The town is also home to The Green Howards Museum that tells the 300 hundred year story of the local regiment. (The museum is currently closed and undergoing a £1.7m Heritage Lottery funded redevelopment but is re-opening in autumn 2014).

A short stroll from the market place is Richmond Station which was, until 1969, the town's railway station. In 2007, the building reopened as simply The Station and now houses two cinema screens, a restaurant and café-bar, an art gallery, vintage lifestyle store, and a range of artisan food-producers. One such producer is Richmond Brewery, a

six-barrel microbrewery creating wonderful Yorkshire Real Ales. Richmond Brewing Company uses ingredients that are locally sourced wherever possible and certainly sourced in the U.K.

With its balance of old buildings, quaint cobbled streets, riverside walks along the river Swale, a range of pubs, restaurants and shops and cafes Richmond is an ideal place to stop and linger awhile when visiting the nearby dales. Richmond is also seen for walkers of the Coast to Coast as the centre of their journey and many use this as a stop-over to recover their strength for the next leg.



Richmond Castle © Phil Lee

Inside Richmond Georgian Theatre



**harrisirwin**  
architects & designers

Aske Stables, Aske, Richmond, North Yorkshire, DL10 4RH

**contact us for more details**

**t:** 01748 825 675

**e:** enquiries@harrisirwin.com

**w:** www.harrisirwin.com



# Get Closer to the Action



with a day at the races this Summer

A day at the races is a wonderful occasion and provides an excellent way to entertain clients, staff, family and friends while enjoying the excitement of top quality horse racing. Whatever the occasion, you will find everything you need at Catterick Racecourse and friendly, professional management and staff will ensure that your day is a success!

Under 18's go FREE\*

## Flat

	FIRST RACE
Wednesday 2nd July	13:50
Wednesday 9th July	14:20
Wednesday 16th July	
Salute Our Heroes Raceday	14:10
Wednesday 23rd July	
Yorkshire Racing Summer Festival	14:10
Tuesday 5th August	
Family Day	14:15
Friday (Eve) 15th August	
Ladies' Evening	17:40
Wednesday 27th August	
Family Day	14:10
Saturday 20th September	14:10

To book tickets or request further Information call 01748 811478  
[info@catterickbridge.co.uk](mailto:info@catterickbridge.co.uk) | [www.catterickbridge.co.uk](http://www.catterickbridge.co.uk)

\*Under 18's go free when accompanied by an adult.



# RICHMOND

THE FRIENDLY FACE OF KIA, SUBARU & ISUZU  
 IN NORTH YORKSHIRE



Come and visit us at...

SG Petch, Green Howards Road, Richmond, DL10 4SY Telephone: 01748 821185

## Leading the way in the Dales



Established 1978 Charltons are traditional, independent, estate agents offering a wide selection of town and country property throughout the region.



A proper Yorkshire welcome,  
an award winning seasonal  
menu featuring produce  
from local farms and game  
from the surrounding moors  
accompanied by fine ales  
and carefully selected  
wines.



An ideal base for exploring  
the Yorkshire Dales and  
the perfect setting for a  
special celebration.

We offer a selection of  
corporate packages and  
we're licensed for civil  
marriage ceremonies  
too. Contact us for more  
information.



## **The Charles Bathurst Inn**

Arkengarthdale, Richmond, North Yorkshire, DL11 6EN

[www.charlesbathurst-arkengarthdale.co.uk](http://www.charlesbathurst-arkengarthdale.co.uk)

T: 01748 886233 E: [info@cbinn.co.uk](mailto:info@cbinn.co.uk)

